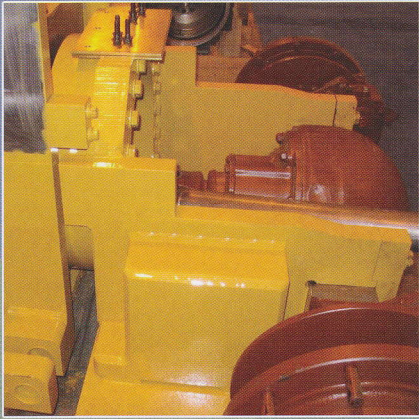


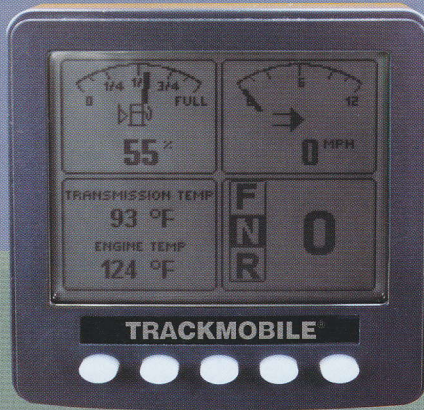
TITAN

 **TRACKMOBILE®**
MOBILE RAILCAR MOVERS

Equa-Flex Pivoting Main Frame



Digital Instrumentation Display



Command Post Joystick



- Tier III Electronic Engine
- CAN-Bus Control System
- Larger Cab with controls integrated into seat
- Air Ride, High Back Swivel Seat with Joystick controls
- Automatic/Manual Power-Shift Transmission
- Digital Gauge Display
- On Board Diagnostics
- Neutral Braking
- Programmed Throttle Control
- Oscillating Frame for equalized wheel loading
- Air Suspension under cab & body frame
- 100 CFM Rotary Compressor

TITAN



TRACKMOBILE®
MOBILE RAILCAR MOVERS

1602 Executive Drive
LaGrange, Georgia 30240 USA
(706) 884-6651 Fax: (706) 884-0390
www.trackmobile.com

TITAN SPECIFICATIONS

MAXIMUM TRACTIVE EFFORT:

- 49,500 lbs [22,453 kg] double coupled
- 33,100 lbs [15,014 kg] single coupled

DRIVE TRAIN CONFIGURATION:

Power transmitted through torque converter, transmission, and transfer case to No-Spin differential and planetary axle assemblies.

- **Engine:** Cummins QSB6.7 turbocharged diesel engine, 6 cylinder, 4 cycle, 260 HP [194 kW] Tier III, Max. torque 550 FT. LBF (748 N-M).
- **Transmission and Torque Converter:** Funk DF Series, four speed forward and reverse.
- **Transfer Case:** Heavy duty hardened alloy steel spur gears. Oil bath lubrication.
- **Rail Drive Axles:** Two Axletech Model PRLC, planetary type.
- **Roadwheel Drive:** Interlocking lug drive.

FRAME:

Heavy-duty, 2" [51 mm] welded frame.

BRAKES:

- **Rail & Road:** Hydraulic actuated disc brakes.
- **Train Brakes:** 100 CFM
- **Parking:** Spring applied, air released, disc/caliper arrangement
- **Neutral Braking:** Automatically applies brake in neutral.

RAIL WHEELS:

27" [686 mm] heat treated cast steel. (AAR) specification

ROAD WHEELS:

20 ply 12.00x20 heavy duty mine service, rubber tires

RAIL GAUGE:

Standard gauge: 56 1/2" [1435 mm]

ELECTRICAL SYSTEM:

12 Volt DC, 160 Amp Alternator, 925 CCA Dual Batteries

AIR INTAKE SYSTEM:

2 Stage filtration, primary + safety element

POWER STEERING:

Hydraulic steering system, pivoting steering wheel

HYDRAULIC SYSTEM:

Constant pressure hydraulic system, with piston pump

COUPLERS:

Two heavy-duty cast steel, AAR style. Air operated, electrically controlled knuckle release.

SANDERS:

Air operated, electrically controlled eight sanders

LIGHTS:

Operator's cab, interior dome, one clear, one red
 Rail Mode & Road Mode - 6 halogen lights, 3 each front & rear
 2 tail & stop combination, rear mounted
 2 lateral work lights to illuminate roadbed
 Step lights

OPERATOR CAB:

Totally enclosed 360 degree visibility. Sound level under 85 dBA. Two doors. Air-ride suspension with stabilizing shock absorbers for body frame and cab. Air suspension seat with 180° swivel. Full instrumentation with digital video display. Cup holders. Rear coupler alignment camera. Arm rest controls. Sun visor. Strobe light. Windshield washers. Fold down jump seat.

WARNING SIGNAL:

Blast type air horn, automatic backup alarm for road operation. Electric alarm.

OPTIONS:

5 & 10# fire extinguishers, air conditioning, air intake pre-cleaner, auxiliary transmission oil cooler, battery wrap heater, cab window extension, camera location options, cold weather fluids, cylinder rod protectors, engine block heater, engine oil pan heater, foam filled tires, (GCS) Ground Control System, hydraulic tank heater, MAX-TRAC wheel slip control, MAX-TRAN® automatic weight transfer system, radio control, switch control spot light, train air charge indicator, transmission oil heater, track mirrors/cab side, track mirrors/off side, turn signals, V shaped snow plow, wide traverse couplers for sharp curves/long cars.

TITAN DIMENSIONS			
	On Rail AAR Clearance Pattern Maintained		On Road
Wheel Base	149.3"	3792 mm	82.5" 2096 mm
Length	194.8"	4948 mm	194.8" 4948 mm
Width	123.0"	3124 mm	123.0" 3124 mm
Height	**145.8"	3703 mm	156.8" 3983 mm
Weight	50,850 lbs. [23,065 kg]		

TABLE OF PERFORMANCE			
Maximum Speed* (Both Directions)	On Rail		On Road
Low	2.4 MPH	[3.9 km/h]	1.5 MPH [2.4 km/h]
2nd gear	4.0 MPH	[6.4 km/h]	2.0 MPH [3.2 km/h]
3rd gear	8.0 MPH	[12.8 km/h]	4.0 MPH [6.4 km/h]
4th gear	14.0 MPH	[22.5 km/h]	8.0 MPH [12.8 km/h]

*Actual speeds obtained will depend on grade, load, track conditions and other factors.

**Shipping height will increase by 1 1/2" due to rail flange plus any necessary truck blocking required.

Trackmobile® LLC reserves the right to change specifications at any time without prior notice.

TRACKMOBILE® LLC

1602 Executive Drive
 LaGrange, Georgia 30240 USA
 (706) 884-6651 FAX (706) 884-0390
 E-Mail: trackmobile@trackmobile.com
 www.trackmobile.com

